

# WINMAG PLUS V6.2

## Alarm management system

### Alarm management system with new design.

WINMAG PLUS is a PC based management system, a technology specifically designed to meet high security, integration, workflows for integrators and end users.

WINMAG plus manages and controls the following applications under one common interface:

Intrusion

Fire

Video

Access control

Rescue route technology

Escape door control

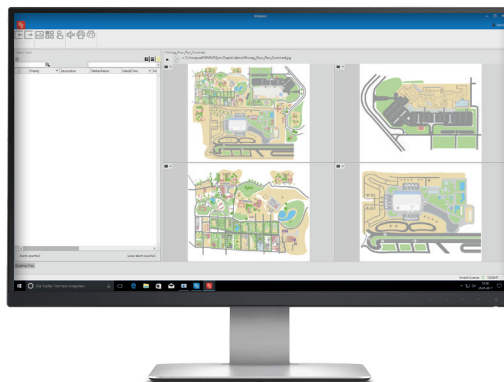
Building management systems

Public address and Voice evacuation

Open Technology such as OPC and BACNET

HTML

WINMAG plus v6.2 sets new standards in functionality, flexibility and quality. The large installed base around the globe demonstrates its outstanding quality and high customer satisfaction.



Messages are displayed graphically in 2D / 3D and in text form.

Due to the open system architecture and customization abilities WINMAG plus adapts dynamically to changes in a connected system. WINMAG plus is a highly scalable solution, and existing options can be easily expanded to include, for example, access control or video.

The integration of an existing or planned building management system including analogue values can be easily implemented with WINMAG plus.

Already existing security systems by other manufacturers can be seamlessly integrated into WINMAG plus. When the network and the requirements grow, WINMAG plus can be expanded to accommodate them. This ensures that you are investing in a reliable system for the future.

A reliable and effective alarm management system is an absolute necessity in the industrial and public sector.

## PERFORMANCE FEATURES AT A GLANCE

- Modular designed alarm management software for security
- Visualization of messages
- Direct control of connected hardware in the network
- Workflow management for security guards
- Individual assignment of user rights
- Integrated simulation functions
- Comprehensive recording of events and operations
- Automated report generation
- Integration of video sequences
- Time programs/calendar function
- Default with integrated database

## BENEFITS

- WINMAG plus adapts to customer processes
- Investment protection for existing components by easily integrating them into the WINMAG plus eco-system
- Extend the system by adding the desired options to the existing license
- Unique in the market by displaying and interacting with 3D models
- Seamless integration with existing Third Party systems, and easy future additions

**Honeywell**

## HUMANS ARE VISUAL BEINGS

The ability to visually assess communications enables rapid data processing and the implementation of prompt and target-oriented interactions.

In the area of highly sensitive security management, there is an urgent need to receive information in a visual format on the current status from all areas of the monitored systems.

With that in view, WINMAG plus provides an innovative, user-friendly and easily customizable user interface with a wide range of standards functions, e.g.:

- Alarmstack
- Priority control
- Individual workflows and operations
- Macro functions enable automatic background processes without user intervention
- Flexible, window-oriented graphics
- Various types of user rights
- Connection of systems over standard PC interfaces, e.g. TCP/IP, serial port
- Open interface to various systems
- Connecting modules to Third Party products (control panels, video matrices, building management system)
- Individual alarm handling and evaluation

WINMAG plus can receive data from various networks, process them and then display in a customizable way:

- Graphics with dynamic symbols
- Tables
- Individual work flows (alarm programs)
- Windows default printer used on each workstation
- Logging in database and files

WINMAG plus data is stored in a protected, encoded database.

WINMAG plus incorporates a global editing environment and a variety of predefined work flows.

## MODULAR DESIGN FOR INDIVIDUAL SOLUTIONS

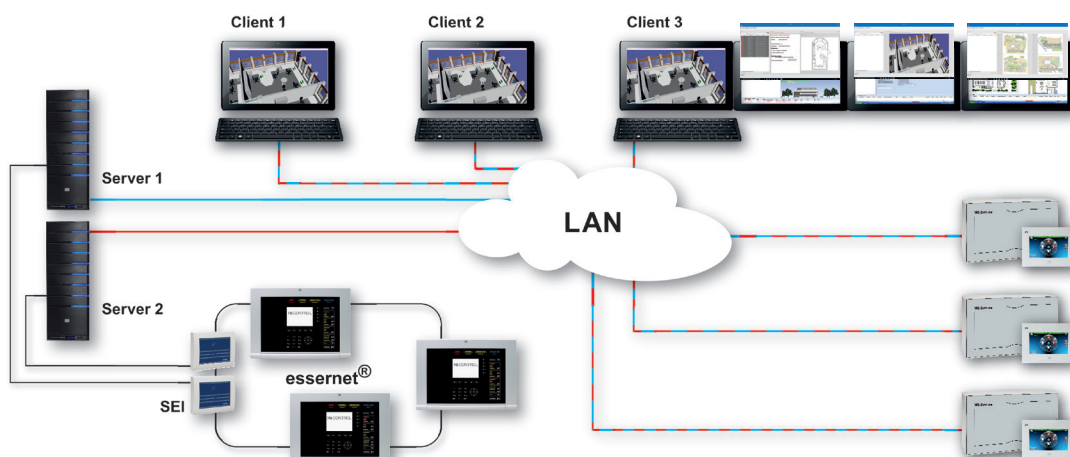
Thanks to its modular design, WINMAG plus offers the appropriate solutions for every size of system and for every area of application.

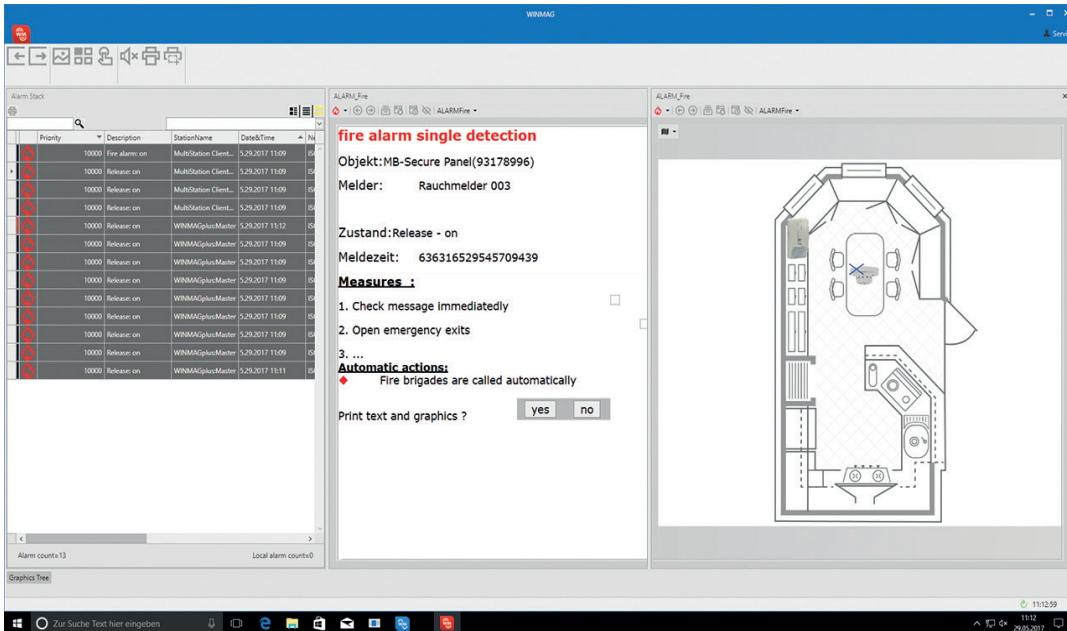
Ranging from WINMAG plus standard package for single stations systems to multi-station systems with incorporation of various networks.

The WINMAG plus software is designed modular and has several license options. The base for WINMAG plus is the installation DVD. This DVD includes also a demo version.

The base licence enables activation of the standard package or the demo version to run as unlimited visualization software on the server workstations and on clients in the network.

The individual options can be ordered separately as an addition to the standard licence.

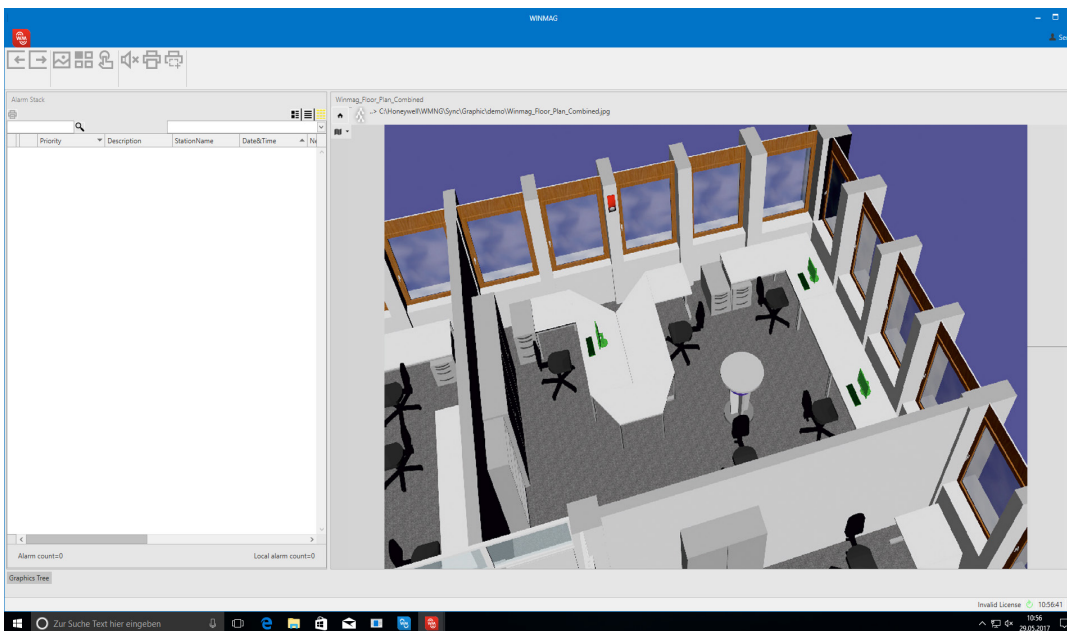




### The alarm window

Every alarm workflow is executed in a separate window. The widgets are used to control the alarm program flow.

Up to 10 alarm programs can be processed simultaneously and independently. The alarm stack can cope with up to 1000 workflows that are sorted dynamically according to priority. The design and appearance of an alarm program is customizable and can be adapted to end customer processes.

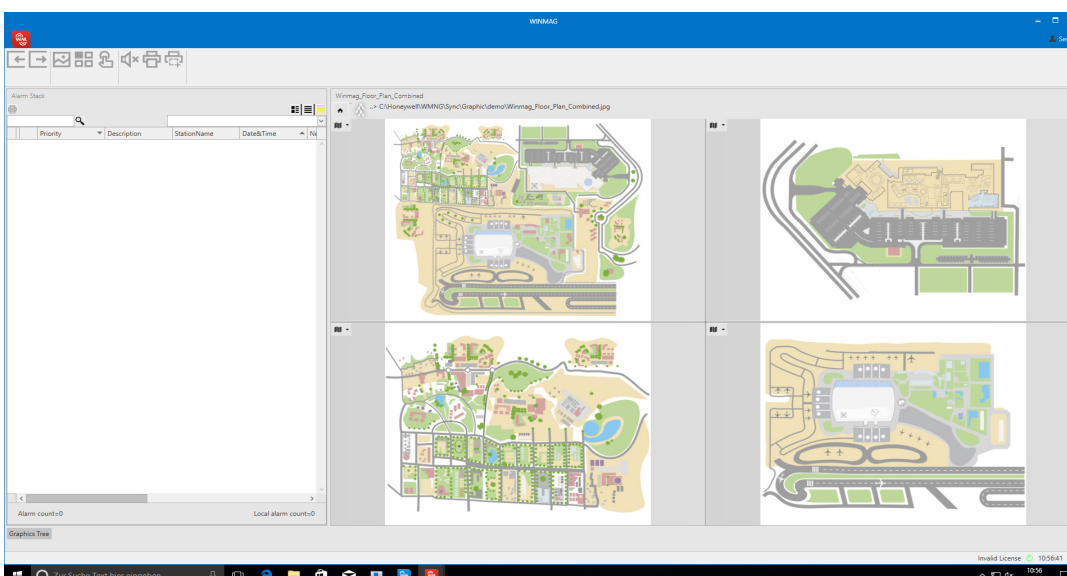


### 3D integration as an option

The 3D option allows use of 3D models of the commonly used formats for improved display of alarm and status information.

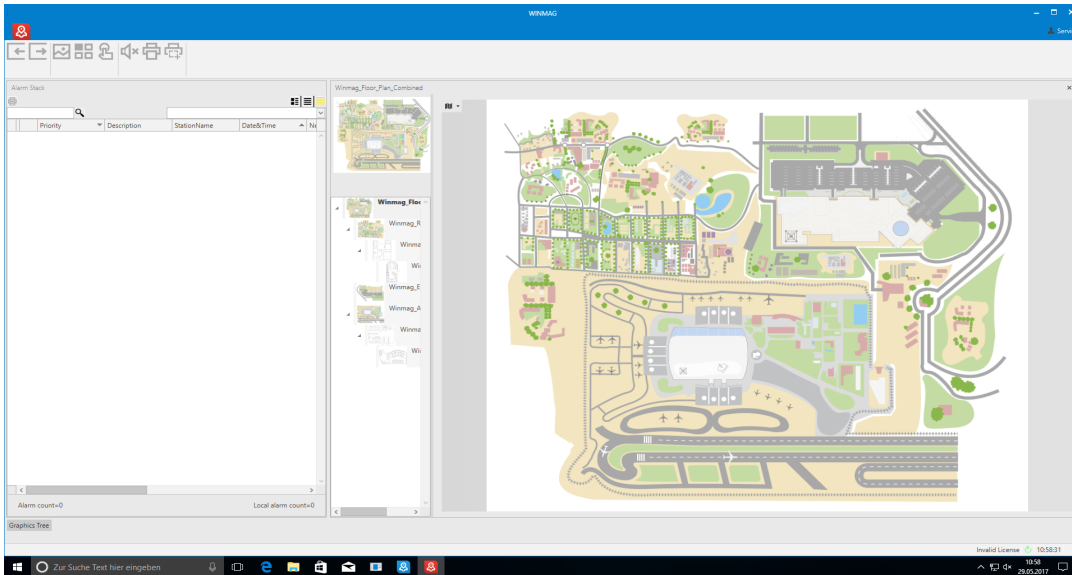
An integration into the overview window as well as a separate display in a detailed view in case of an alarm is possible. The presentation of the model can be done as full view and as a detailed view depending on the requirements.

The 3D view allows an optimal three-dimensional visualization of the overall situation inside a building based on the respective user rights.



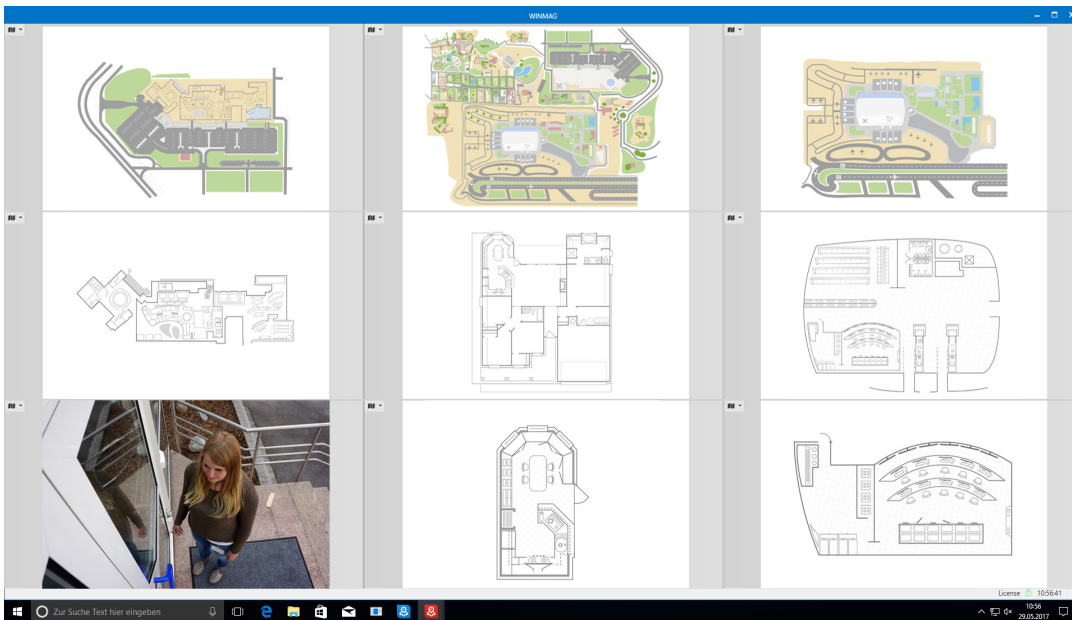
### The standard view

A special form of the graphic background window is the "Standard view". WINMAG plus can be displayed as a full screen or as a window on the desktop. The WINMAG plus program separates the program window into several views. The program background can be customized accordingly to the customer specification. WINMAG plus is enabled for "Multi-monitors" usage and supports up to 4 monitors.



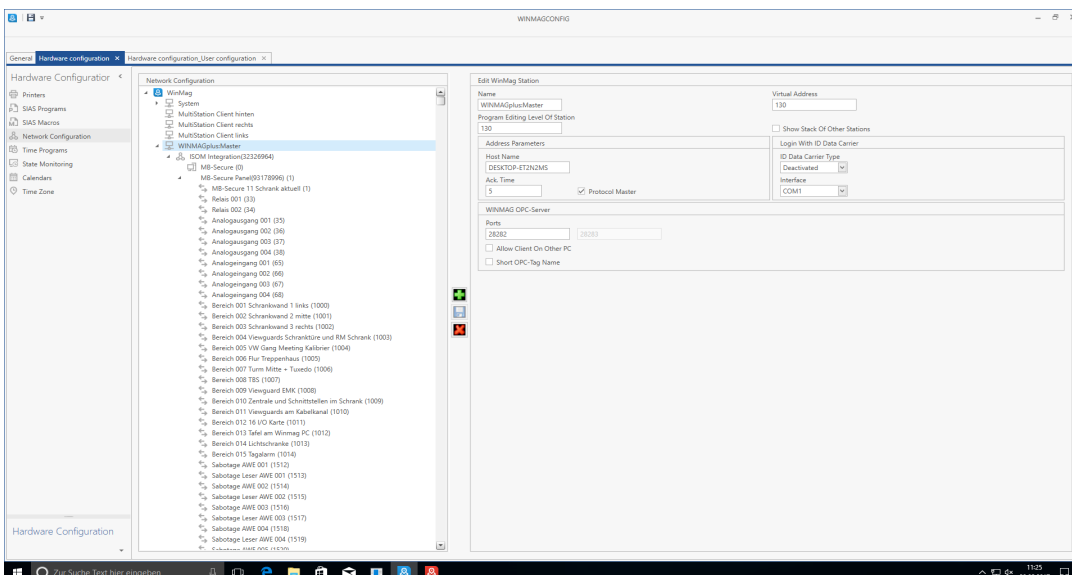
The graphics window

Enables the display graphics in a graphic tree as well as the integration of active and dynamic graphics into a basic graphic (graphic in graphic). It is used to display symbols including dynamic display of detectors and system features. It allows the starting of macros or pop-up programs on left or right mouse clicks on a symbol. Display of "Quick Information" for graphic references and symbols.



The multiview window

Enables the display of up to 12 windows on a monitor. All windows are displayed in a split view next to each another and have the same size. Automatic zooming of graphics to fit to the size of the origin window is included. The example shows a window including a live video stream.



System configuration window

The "System Configuration" contains functions for the configuration of networks, objects, I/O devices, types, alarm reasons, symbols, users, menu bars, printer settings and system settings. Based on the user rights only the appropriate configuration settings are displayed.

# WINMAG PLUS V6.2 ADDITIONAL FEATURES

- Free programmability
- Flexible, window-oriented graphics
- Display and location of detectors in graphics
- Display of actual situation
- Polygon graphic references
- Support of AutoCAD drawings
- Start of other programs from WINMAG plus
- High-performance programming language  
SIAS for customer-specific adaptation of internal processes
- Remote control via modem or ISDN possible
- Access to other databases via ODBC
- Honeywell systems can be integrated -  
ESSER, Gent, Notifier, XTRALIS, Galaxy  
Dimension
- Integration of VAPA-Systems VARIODYN D1
- Integration with Honeywell MAXPRO  
VMS, Fusion 4, HRDP, HeiTel, Milestone,  
Geutebrück and Dallmeier
- Integration of transmission devices DS 6750  
(IP/PSTN) or DS 7700 (IP/ISDN) for direct  
connection to external systems
- Integration of IQVisitor for the management  
of visitor IDs in conjunction with IQMA
- Distance-time calculations in combination  
with IQMA
- Enhanced reporting and logging - generation  
of reports directly from WINMAG plus,  
unlimited report period by back-up  
functionality as well as export and import of  
reports
- Compatible with 64 bit operating systems:
  - Windows Server 2008 (Foundation-Version  
not available)
  - Windows Server 2008 R2
  - Windows 8/8.1 (without RT)
  - Windows Server 2012 R2 (Foundation-  
Version not available)
  - Windows 10
- Notification module with the SMS, E-Mail,  
Voice Mail and Fax support
- ESPA 4.4.4 interface available
- High security failover functionality built in,  
with multiple redundancy
  - 2<sup>nd</sup> PC with identical data in the network
  - 2 transmission paths
  - hot-standby redundancy
- Connection possibilities via open interfaces
  - OPC-Server / Client
  - BACnet-Server / Client
  - WINMAG SDK
- Connection via Ethernet (TCP/IP) e.g. VdS IP  
network
- Connection to EIB and Modbus possible

**Note:**

**To use specific features, necessary options  
needs to be ordered**

# WINMAG PLUS V6.2 CONNECTION OF DIFFERENT SYSTEMS IN THE BUILDING

## INTEGRATED SYSTEMS OFFER MANY SYNERGIES:

You need less material, reduced installation time and they are easier to maintain. Therefore, they are standard in modern building technology.

Each system speaks its own language, has its own requirements and requires certain knowledge of the user.

The all-encompassing, superior alarm management system WINMAG plus understands and translates the information from all different types of systems.

It combines information under a common user interface and messages from the following systems:

- Fire and Intrusion
- Access Control
- Video Surveillance
- Building Automation
- Escape Route
- PAVA
- Building Management Systems (OPC or BACnet interfaces)

This and the ability to operate the entire system from a single workstation reduces the overall cost of the system. Immediate and targeted workflows complete this picture.

## Open Standards

- OPC Client and Server
- BACnet Client and Server
- SDK

## Escape Route

- Assa Abloy
- Dorma



## PAVA

- VARIODYN D1

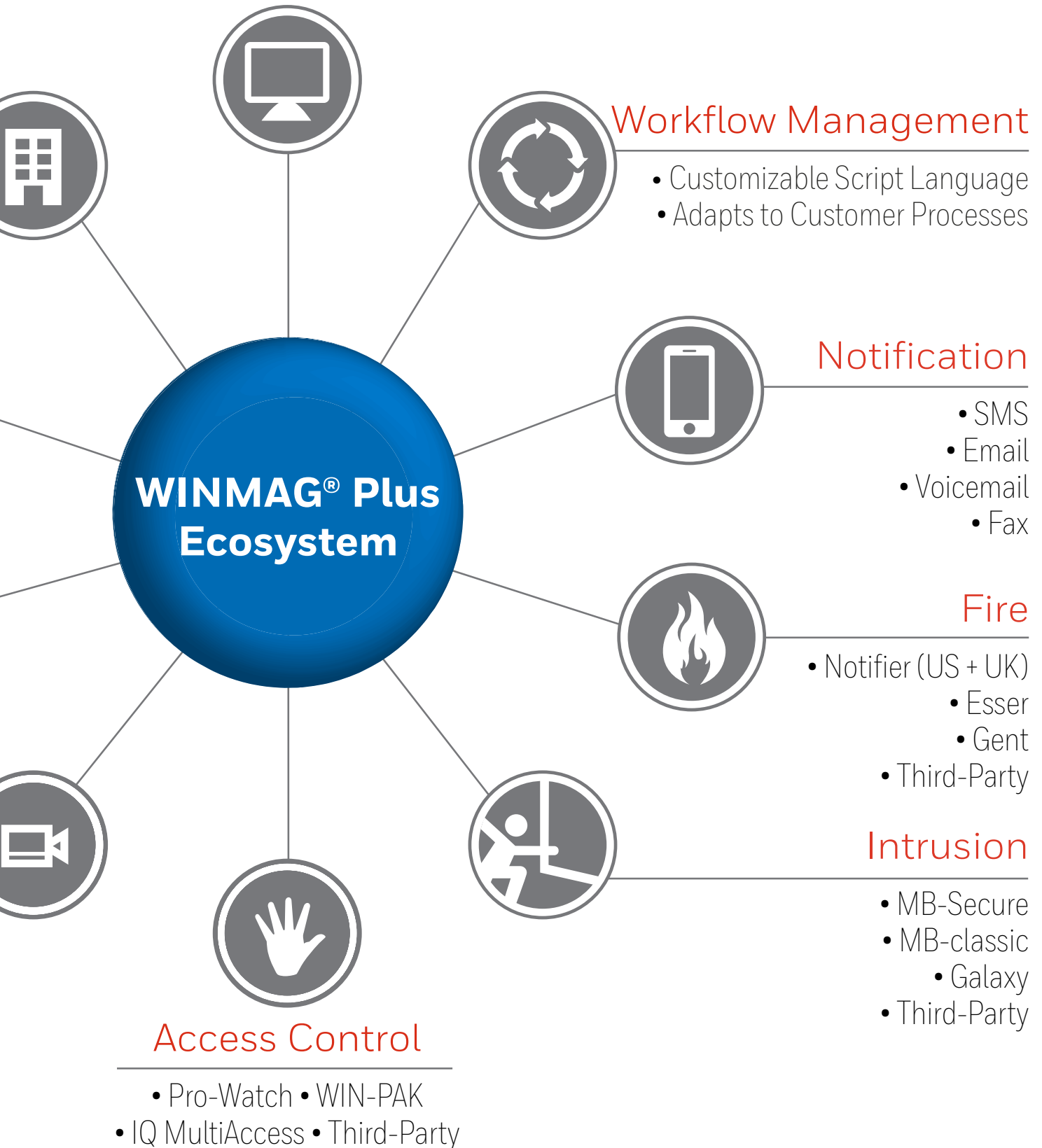


## Video

- MAXPRO VMS
- Fusion
- HRDP
- Third-Party

## Graphical User Interface

2D Floor Plans • 3D Models • AutoCAD



# WINMAG PLUS V6.2 ORDERING INFORMATION

## WINMAG PLUS

WM1001 WINMAG plus installation medium

## BASE LICENSES WINMAG PLUS

WM2010 Base package with 500 data points  
WM2020 Base package with 1.500 data points  
WM2030 Base package with 2.500 data points  
WM2040 Base package with 10.000 data points  
WM2050 Base package with 20.000 data points  
WM2060 Base package with 50.000 data points

## UPGRADE PACKAGE WINMAG PLUS TO NEWEST VERSION

WM2310 Upgrade including 2.500 data points  
WM2320 Upgrade including 10.000 data points  
WM2330 Upgrade including 20.000 data points  
WM2340 Upgrade including 50.000 data points

## DATA POINT EXTENTIONS FOR BASE PACKAGE

WM2110 Additional 500 data points  
WM2120 Additional 2.500 data points  
WM2130 Additional 5.000 data points  
WM2140 Additional 10.000 data points

## CLIENT LICENSES

WM2200 WINMAG plus client  
- single license  
WM2210 WINMAG plus client  
- license package, 5 pcs.  
WM2220 WINMAG plus client  
- license package, 10 pcs.  
WM2230 WINMAG plus client  
- license package, 25 pcs.

## OPTIONS

### EXPANSION LICENSES

WM3010 Intrusion MB series  
WM3020 Intrusion Galaxy  
WM3110 Fire system - Esser  
WM3120 Fire system - Gent  
WM3130 Fire system - Notifier  
WM3140 VARIODYN D1  
WM3200 Access Control IQ MultiAccess  
WM3201 Access Control Pro-Watch  
WM3202 Access Control WIN-PAK  
WM3210 Honeywell Video  
WM3220 DS6750/DS7700  
WM3230 Nurse call  
WM3240 DTS System  
WM3250 Escape Route  
WM3260 CMSI  
WM3510 Geutebrück Video  
WM3520 Dallmeier Video  
WM3530 SeeTec Video  
WM3540 Milestone Video  
WM3550 Legacy Video systems

WM4010 Redundancy  
WM4030 Multi Monitor  
WM4040 Auto-CAD®  
WM4130 Escalation  
WM4160 Login reader

### OPC AND BACNET

WM5100 OPC Server  
WM5200 WINMAG plus OPC Client  
WM5300 OPC/BACnet 500 Tags  
WM5600 WINMAG plus BACnet Server  
WM5700 WINMAG plus BACnet Client  
WM5800 Software universal gateway for PC  
WM6001 WINMAG plus SDK

### SERVICE

784830 Entry of a reporting point  
784832.10 Entering a text page  
784833 Input of a graphics page  
784839 Conversion of a graphics page

## For More information

[www.security.honeywell.com/uk](http://www.security.honeywell.com/uk)

## Honeywell Commercial Security

Aston Fields Road  
Whitehouse Industrial Estate  
Runcorn, Cheshire WA7 3DL  
Tel: +44 (0)8448 000 235  
[www.honeywell.com](http://www.honeywell.com)

Subject to change without notice.

HIS-WINMAG\_plus\_62-01-EN(0420)DS-ZB  
© 2020 Honeywell International Inc.

THE  
FUTURE  
IS  
WHAT  
WE  
MAKE IT

**Honeywell**